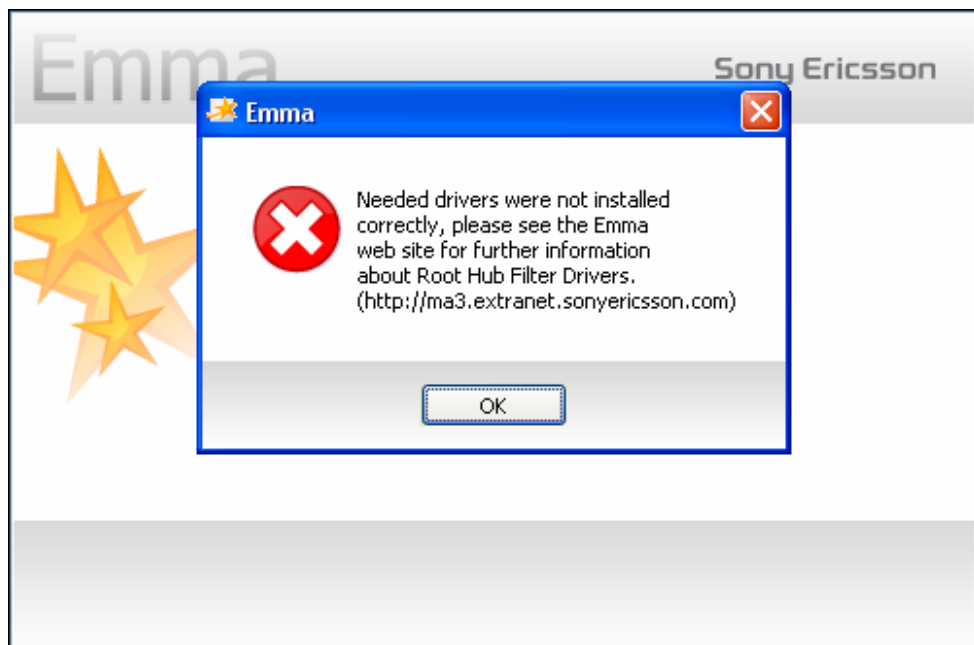


## Troubleshooting Root Hub Filter Drivers

This document describes how to solve the problem indicated by the following dialog:

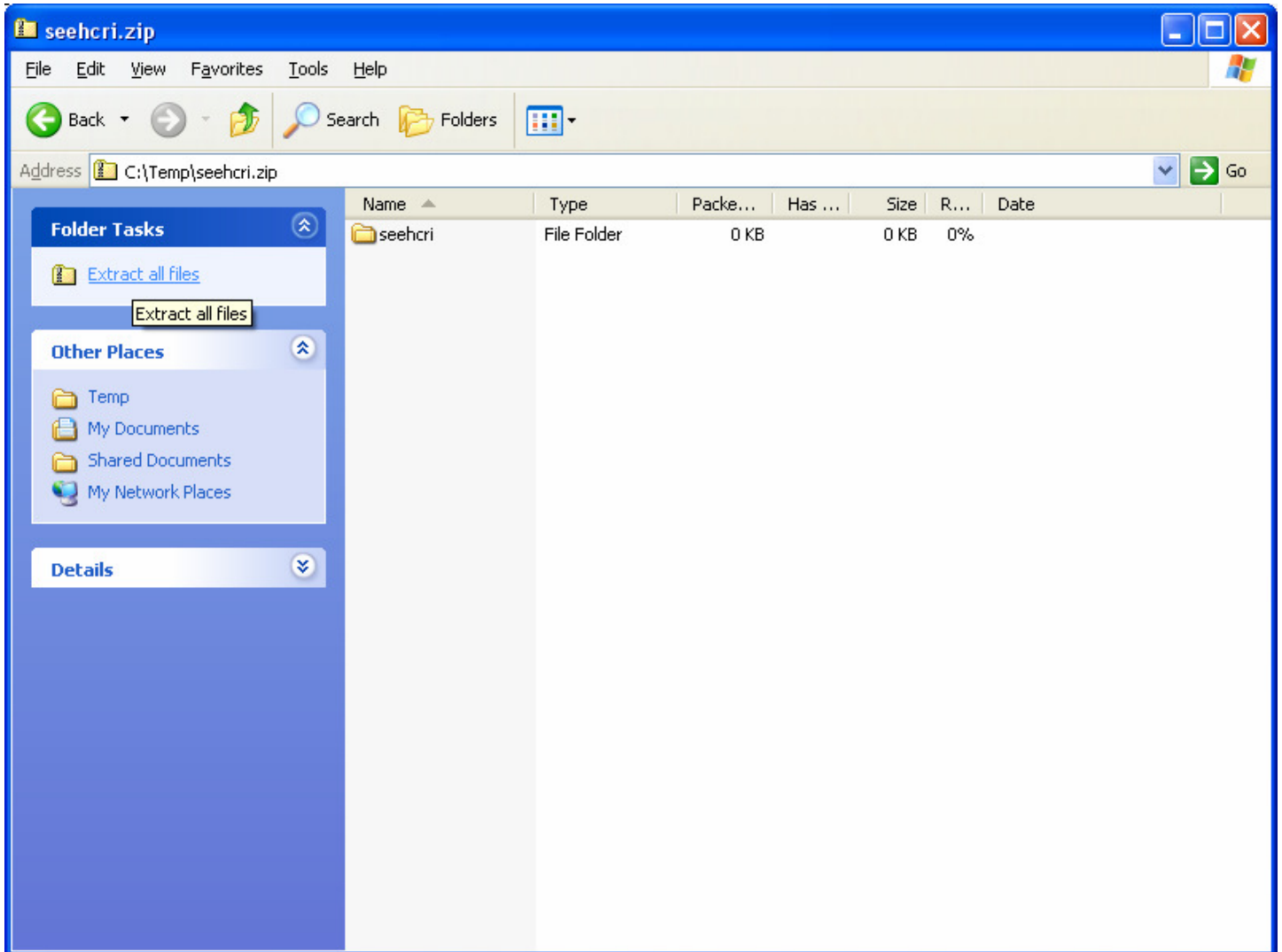


Close all instances of Emma and follow the steps below. Start Emma after completing the steps and **please restart the computer if prompted to do so.**

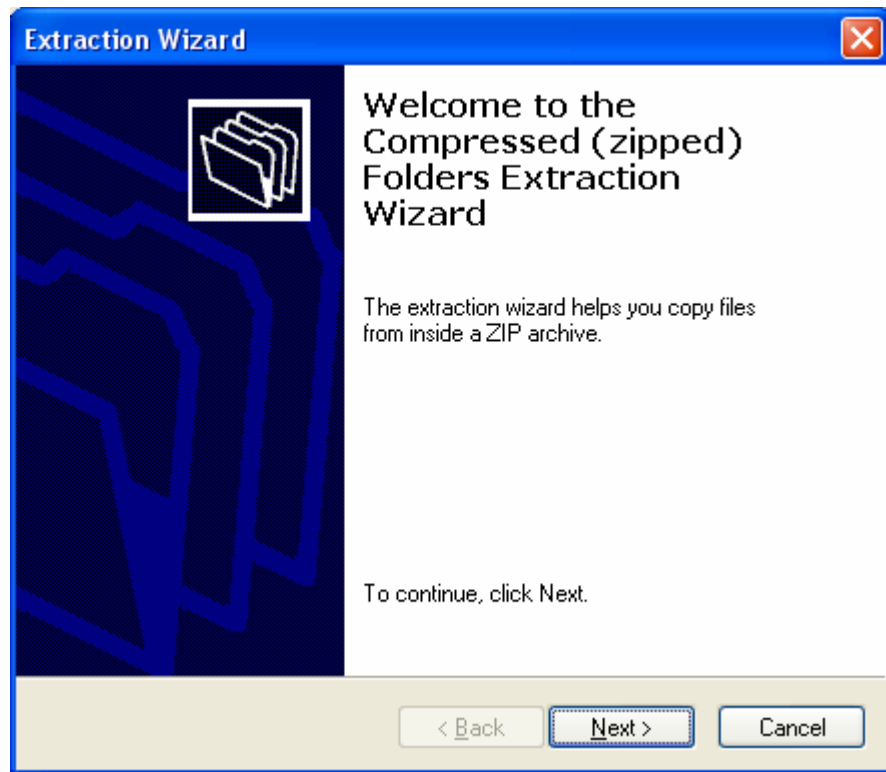
The description is written for a computer running Windows XP. Note that the unzipping part may look different if an external zip tool, such as WinZip, is installed on the computer. Consult the external zip tool manual for help about unzipping files.

Note that local administrator rights are needed to go through the steps in this description.

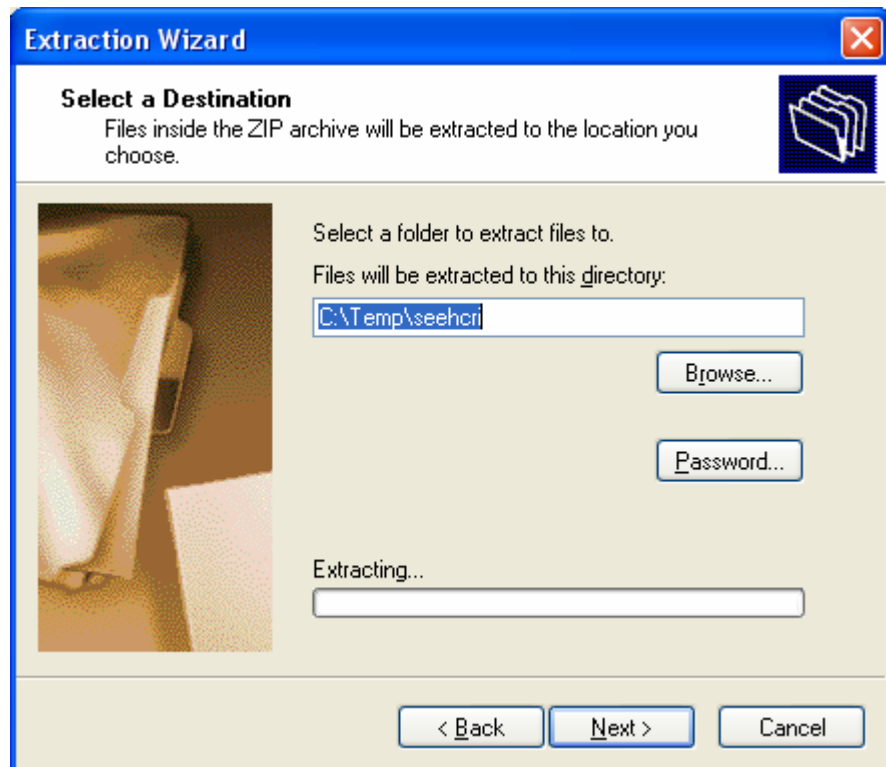
1. Download “seehcri-1.1.0.0.zip” (from <http://ma3.extranet.sonyericsson.com>) to a temporary folder and unzip it. The window shown below will appear when double clicking “seehcri-1.1.0.0.zip” (if Win XP standard zip tool is used). Press “Extract all files”.



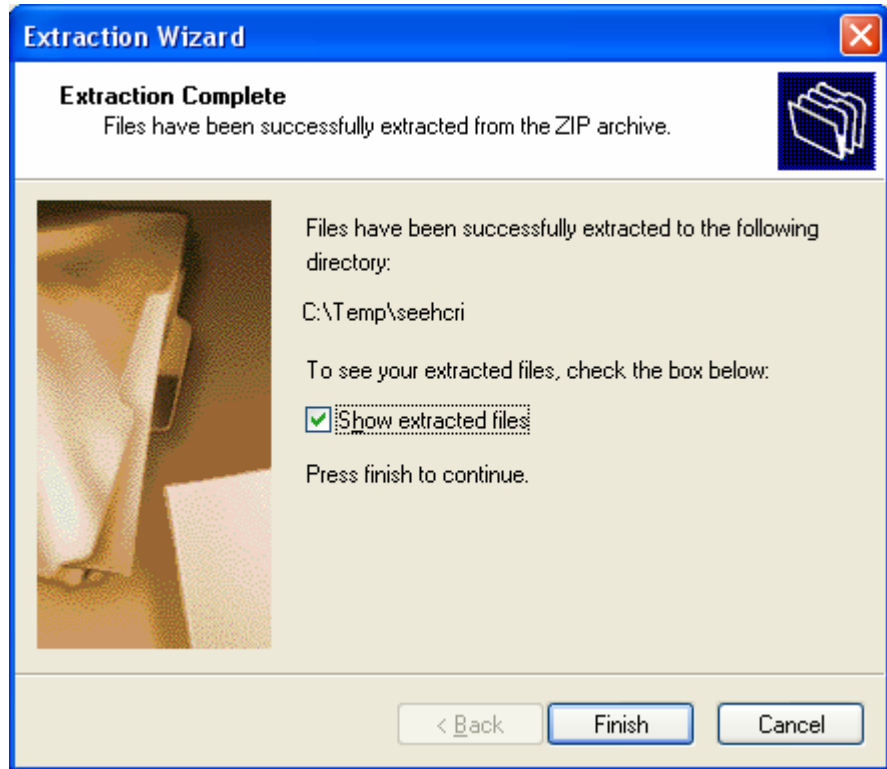
2. A wizard appears. Click Next



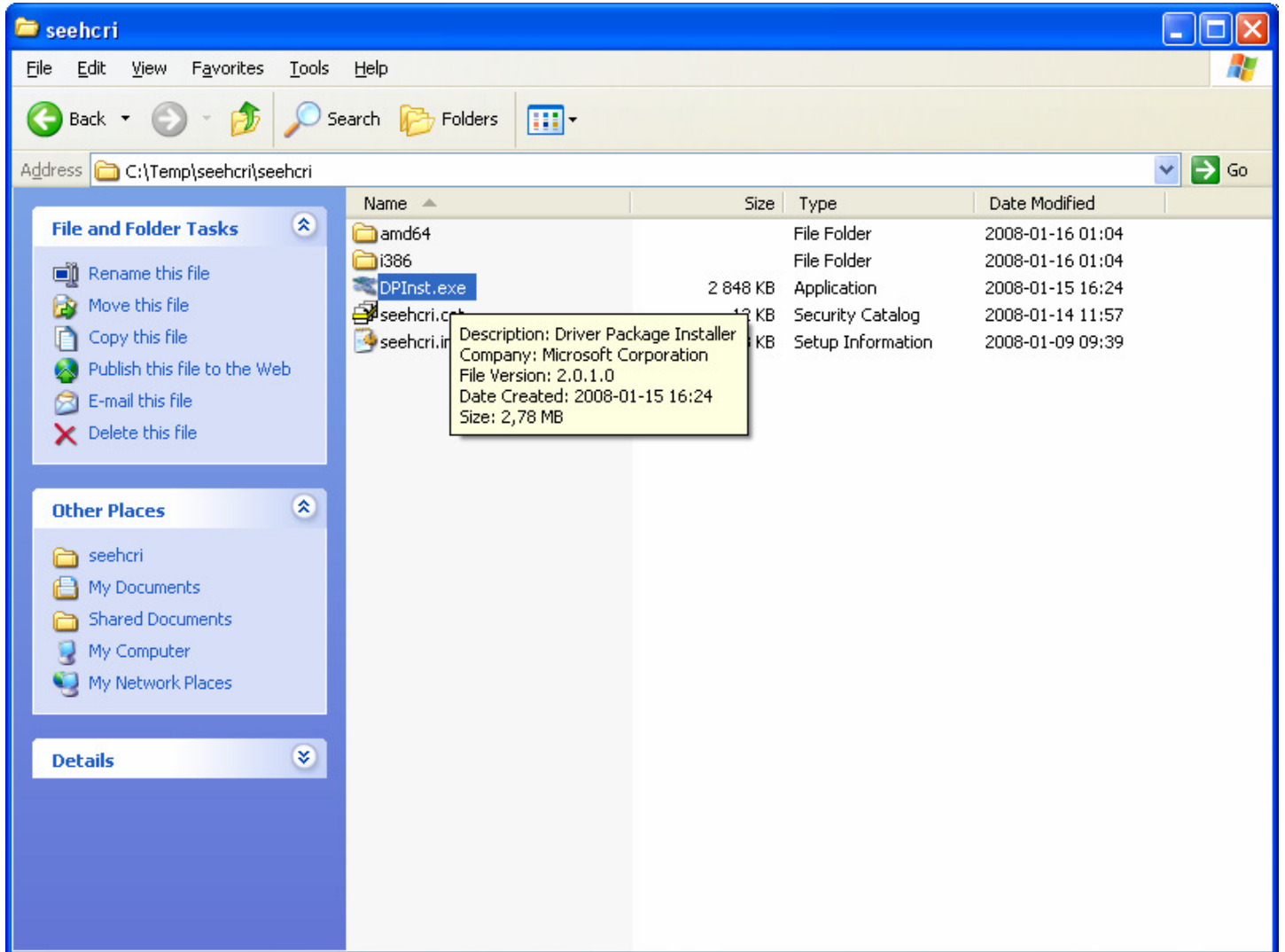
3. Choose a temporary folder where to put the extracted files and press Next.



4. Mark the checkbox "Show extracted files" and press Finish.



5. You should now see the extracted files in a separate window as shown below.



The screenshot shows a Windows Explorer window titled 'seehcri'. The address bar displays 'C:\Temp\seehcri\seehcri'. The main pane shows a list of files and folders:

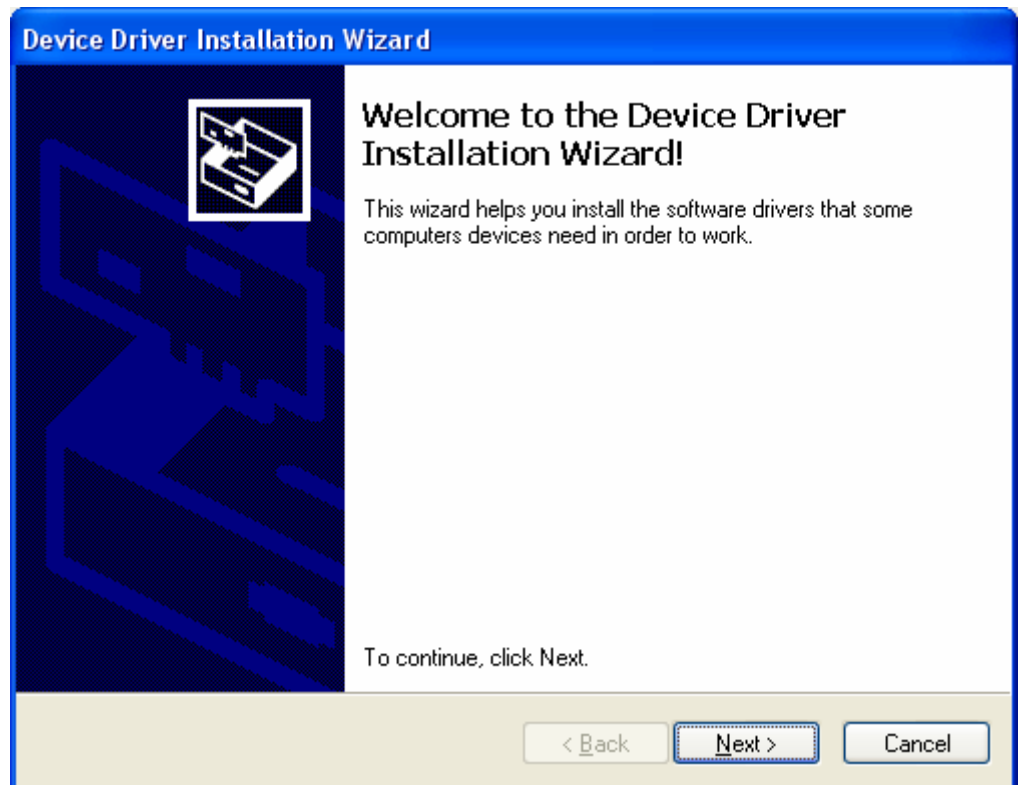
Name	Size	Type	Date Modified
amd64		File Folder	2008-01-16 01:04
i386		File Folder	2008-01-16 01:04
DPIInst.exe	2 848 KB	Application	2008-01-15 16:24
seehcri.cat	13 KB	Security Catalog	2008-01-14 11:57
seehcri.inf	2,78 MB	Setup Information	2008-01-09 09:39

A tooltip is displayed over the 'seehcri.inf' file, containing the following information:

- Description: Driver Package Installer
- Company: Microsoft Corporation
- File Version: 2.0.1.0
- Date Created: 2008-01-15 16:24
- Size: 2,78 MB

The left sidebar includes 'File and Folder Tasks' (Rename, Move, Copy, Publish, E-mail, Delete) and 'Other Places' (seehcri, My Documents, Shared Documents, My Computer, My Network Places). A 'Details' section is also visible at the bottom of the sidebar.

6. Double click on DPlnst.exe and the wizard below appears. **Windows Vista users must right click on DPlnst.exe and select "Run as administrator"**.



7. Click Next and the installation will start. Finally you should see the result below. Click finish after verifying that the installation was successfully installed.

